

# GENERAL IQ

1. Which of the following is an edible shoot?

- (1) Potato                      (2) Radish  
(3) Carrot                      (4) Apple

2. Malnutrition of food is caused due to

- (1) Intake of balanced diet  
(2) Intake of insufficient nutrients  
(3) Intake of lot of roughage  
(4) None of these

3. Silk is obtained from \_\_\_\_\_

- (1) Larva of silkworm.  
(2) Sheep  
(3) Cotton plants of good quality.  
(4) All of these.

4. Kerosene or edible oil do not dissolve in water. They are called-

- (1) Immiscible liquids  
(2) Solute and solvent  
(3) Solvent and solution  
(4) Miscible liquids

5. Which of the following methods is used to separate pebbles and stones from sand?

- (1) Sieving                      (2) Winnowing  
(3) Handpicking              (4) None of these

6. The given table lists some reversible and irreversible changes.

Reversible change	Irreversible change
Boiling of water	Cutting of trees
Bending of wire	Cooking of food
Souring of milk	Burning of wood

Which change is listed incorrectly in the given table?

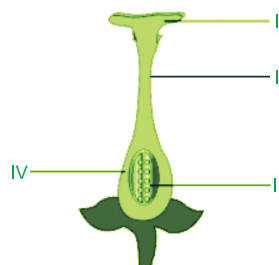
(1) Souring of milk

(2) Cooking of food

(3) Boiling of water

(4) Bending of wire

7. Which labelled structure illustrates the part where pollen grains germinate to give pollen tube?



(1) I

(2) II

(3) III

(4) IV

8. Muscles are attached to the bones with the help of

- (1) Pivotal joints  
(2) Ligaments  
(3) Tendons  
(4) None of these

9. In desert plants like cactus, photosynthesis is carried out by:

- (1) Stem                      (2) Root  
(3) Leaf                      (4) Flower

10. One Kilometre is equal to \_\_\_\_\_ metres.

- (1) 10.  
(2) 50.  
(3) 80.  
(4) 1000.

Class 6	
Q.no	Answer
1	1
2	2
3	1
4	1
5	1
6	1
7	2
8	3
9	1
10	4