

EtG

# OLYMPIAD EXPLORER



Workbook for

International **CYBER** Olympiad  
National/International Olympiads/Talent Search

Based on CBSE, ICSE, GCSE, State Board Syllabus & NCF (NCERT)

100's of Q's with answers

- Chapterwise Practice Q's
- Revision Q's
- Sample Paper



Class

8

## EDUHEAL FOUNDATION

### • LEARNING FOR LIFE

EduHeal Foundation conducts 5 Olympiads annually reaching  
• 4 Lakh + Students • 50,000 Coordinating Teachers and having  
in English / Maths / Science / Biotech / Computer & 300 R

PRIZES



WORKSHOP • TEACHER TRAINING PROG. • MAGAZINE/LAB GRANT • PRINCIPAL LEADERSHIP AWARD.

# Contents

S.No.	Chapters	Page No.
1.	Development of Computer .....	1
2.	How Computer Works? .....	5
3.	Computer Software Fundamentals .....	10
4.	Managing Windows 95/98 .....	16
5.	Word Processing with MS-Word .....	20
6.	Surfing the Internet .....	24
7.	MS-Word .....	30
8.	Excel .....	33
9.	Revision Questions .....	38
10.	ICO Sample Paper .....	43



## SYLLABUS GUIDELINES

Technological Development of Computers; How Computer Works?; Computer Software Fundamentals; Coding with Logo; Managing Windows; Word processing with MS-Word; Surfing the NET



- Q.1.** Who was the father of Punched Card Processing?  
(a) J Presper Eckert      (b) Charles Babbage  
(c) Dr. Herman Hollerith      (d) Blaise Pascal
- Q.2.** A factor which would strongly influence a business person to adopt a computer is its :  
(a) Accuracy      (b) Reliability  
(c) Speed      (d) All of these
- Q.3.** In which year were chips used inside the computer for the first time?  
(a) 1964      (b) 1975  
(c) 1977      (d) 1981
- Q.4.** The first microprocessor built by the Intel Corporation was called:  
(a) 8008      (b) 8080  
(c) 4004      (d) 8800
- Q.5.** What was the name of the first commercially available microprocessor chip?  
(a) Intel 8008      (b) Intel 8080  
(c) Intel 4004      (d) Motorola 6809
- Q.6.** When was the first minicomputer built?  
(a) 1965      (b) 1962  
(c) 1971      (d) 1966
- Q.7.** The first digital computer built with IC chips was known as:  
(a) IBM 7090      (b) Apple-1  
(c) IBM System/360      (d) VAX-780
- Q.8.** Which one of the following is the first second-generation computer?  
(a) IBM 7090      (b) IBM 801  
(c) IBM 7070      (d) IBM 650
- Q.9.** Which computer was the first to use the magnetic drum for memory?  
(a) IBM-650      (b) IBM-7090  
(c) IBM-701      (d) PDP-1
- Q.10.** What is the name of the British gentleman who was the first to put forward in 1952 the idea for the integrated circuit?

- (a) Jack S. Kilby                      (b) G.W. Dummer  
(c) William Shockley                (d) John Bardeen
- Q.11.** The magnetic tape consists of a plastic tape with a surface coating of magnetic material. When was it invented?  
(a) 1968                                      (b) 1964  
(c) 1956                                      (d) 1946
- Q.12.** In the third generation of computers :  
(a) Distributed data processing first became popular  
(b) An operating system was first developed  
(c) High-level procedural languages were first used  
(d) On-line, realtime systems first became popular
- Q.13.** To produce high-quality graphics (hardcopy) in colour, you would want to use a/an:  
(a) RGB monitor                      (b) Plotter  
(c) Ink-Jet printer                      (d) Laser printer
- Q.14.** The personal-computer industry was started by :  
(a) IBM    (b) Apple  
(c) Compaq                                      (d) HCL
- Q.15.** The word size of a microprocessor refers to :  
(a) The amount of information that can be stored in a byte  
(b) The amount of information that can be stored in a cycle  
(c) The number of machine operations performed in a second  
(d) The maximum length of an English word that can be input to a computer
- Q.16.** When was the IBM XT microcomputer released in the market?  
(a) 1970                                      (b) 1971  
(c) 1987                                      (d) 1986
- Q.17.** Bar codes store information using:  
(a) Punch holes                      (b) Thick and thin lines  
(c) Magnetized spots                (d) Bits
- Q.18.** A group of integrated parts is called :  
(a) system                                      (b) swapping  
(c) circuits                                      (d) system analysis
- Q.19.** Which is an electronic device that can store temporarily a single bit of data.  
(a) Accumulator                      (b) Buffer  
(c) Memory                                      (d) Latch

- Q.20.** The first generation computers were characterised by :  
(a) Micro processor chips (b) Thermionic valves  
(c) Transistors                      (d) Integrated circuits
- Q.21.** The speed of third generation computer is:  
(a) 10 sec                                      (b) 5 nano sec  
(c) 25 sec                                      (d) 64 sec
- Q.22.** Which type of computers accuracy is superhigh.  
(a) Optical                                      (b) Hidden  
(c) Hybrid                                      (d) Digital
- Q.23.** A modern digital computer has :  
(a) Extremely high speed (b) Large memory  
(c) Almost unlimited array (d) All of these
- Q.24.** Which company is the biggest player in the microprocessor industry?  
(a) Motorola                                      (b) IBM  
(c) Intel    (d) AMD
- Q.25.** What is the full form of *COBOL*?  
(a) Common Business Objective Language  
(b) Command Byte Oriented Language  
(c) Common Business Oriented Language  
(d) Character Business Oriented Language
- Q.26.** Find the invalid combination.  
(a) Dot Matrix Printer - Impact Printer  
(b) Laser Printer - Non Impact Printer  
(c) Daisy wheel printer - Non Impact Printer  
(d) Inkjet printer - Non Impact Printer
- Q.27.** In which generation of computers, Transistors were used?  
(a) First generation computers  
(b) Second generation computers  
(c) Third generation computers  
(d) Fourth generation computers
- Q.28.** Which computer system is mainly used in Weather forecasting and Disaster control?  
(a) Super computer                      (b) Mainframe computer  
(c) Micro computer                      (d) Personal computer

- Q.29.** Which of the following devices can be used to directly input 'Text books'?
- (a) OCR (b) OMR  
(c) MICR (d) None of these
- Q.30.** Ascending order of a data hierarchy is -
- (a) Bit- byte- record- field-file - database  
(b) Bit- byte- field- record- file- database  
(c) Byte- bit- record- file-database  
(d) None of the above
- Q.31.** Personal computers are also called
- (a) Desktop computers (b) Portable computers  
(c) Advanced computers (d) Palmtop computers
- Q.32.** ENIAC stands for
- (a) Electronic Number Instruction and Code  
(b) Electronic Number Integrated and Calculator  
(c) Electronic Number Instruction Access Calculator  
(d) None of these
- Q.33.** An IP address contains four sets of numbers ranging from :
- (a) 1 to 100 (b) 1 to 1000  
(c) 0 to 255 (d) 1 to 500
- Q.34.** X-MP is Models of :
- (a) Micro Computer  
(b) Mini Computer  
(c) Main Frame Computer  
(d) Super Computer



## ANSWERS

1. (c) 2. (d) 3. (b) 4. (c) 5. (c) 6. (a) 7. (c) 8. (a)  
 9. (a) 10. (b) 11. (d) 12. (d) 13. (b) 14. (b) 15. (b) 16. (c)  
 17. (b) 18. (c) 19. (d) 20. (b) 21. (b) 22. (d) 23. (d) 24. (c)  
 25. (c) 26. (c) 27. (b) 28. (a) 29. (a) 30. (b) 31. (a) 32. (b)  
 33. (c) 34. (d)



- Q.1.** Which of the following is an example of nonvolatile memory?  
(a) ROM (b) VLSI  
(c) LSI (d) RAM
- Q.2.** Which is used for manufacturing chips?  
(a) Bus (b) Control unit  
(c) Semiconductors (d) (a) and (b) only
- Q.3.** The computer code for the interchange of information between terminals is :  
(a) ASCII (b) BCD  
(c) EBCDIC (d) all of these
- Q.4.** A byte is comprised of :  
(a) one bit (b) four bits  
(c) eight bits (d) sixteen bits
- Q.5.** The CPU chip used in a computer is partially made up of :  
(a) copper (b) iron  
(c) gold and silver (d) silica
- Q.6.** The silicon chips used for data processing are called :  
(a) RAM chips (b) ROM chips  
(c) micro processor (d) PROM chips
- Q.7.** The hardware in which data may be stored for a computer system is called :  
(a) Registers (b) Bus  
(c) Control unit (d) Memory
- Q.8.** A half byte is known is :  
(a) Data (b) Bit  
(c) Half byte (d) Nibble
- Q.9.** The most common binary code in use today is the 8 bit ASCII code. What do the letters ASCII stand for?  
(a) American Standard Code for International Interchange  
(b) American Standard Code for Information Interchange  
(c) American Standard Code for Intelligence Interchange  
(d) American Scientific Code for Information Interchange
- Q.10.** One thousand bytes represent a :  
(a) mega byte (b) giga byte  
(c) kilo byte (d) none of these

- Q.11.** CD-ROM is a :
- (a) Semiconductor memory (b) Memory register  
(c) Magnetic memory (d) None of these
- Q.12.** Which of the following is the user programmed semiconductor memory?
- (a) SRAM (b) DRAM  
(c) EPROM (d) all of the above
- Q.13.** Which of the following is not a primary storage device?
- (a) Magnetic tape (b) Magnetic disk  
(c) Optical disk (d) None of the above
- Q.14.** A name or number used to identify a storage location is called:
- (a) A byte (b) a record  
(c) an address (d) all of these
- Q.15.** A memory bus is mainly used for communication between :
- (a) processor and memory  
(b) processor and I/O devices  
(c) I/O devices and memory  
(d) input device and output device
- Q.16.** Which chips are erasable by ultra-violet rays after removing them from the main circuit?
- (a) EPROM chips (b) EEPROM chips  
(c) PROM chips (d) All of these
- Q.17.** EPROM consists of :
- (a) bipolar transistors (b) easily erasable  
(c) MOSFETs (d) Diodes
- Q.18.** Which of the following is used only for data entry and storage, and never for processing?
- (a) Mouse (b) Dumb terminal  
(c) Microcomputer (d) None of these
- Q.19.** Different components on the motherboard of a PC processor unit are linked together by sets of parallel electrical conducting lines. What are these lines called?
- (a) Conductors (b) Buses  
(c) Connectors (d) None of these
- Q.20.** Where have the program and data to be located before the ALU and control unit of a computer can operate on it?
- (a) Internal memory (b) Secondary memory  
(c) Microprocessor (d) Magnetic tapes

- Q.21.** What is the name of the logic circuit which can add two binary digits?
- (a) Full adder (b) Half adder  
(c) Buffer (d) Register
- Q.22.** A microcomputer has primary memory of 640K. What is the exact number of bytes contained in this memory?
- (a)  $64 \times 1000$  (b)  $640 \times 100$   
(c)  $640 \times 1024$  (d) either (b) or (c)
- Q.23.** Two new types of semiconductor memories are :
- (a) Magnetic disks  
(b) Charge-coupled devices  
(c) Magnetic bubble memory  
(d) Both (b) and (c)
- Q.24.** Magnetic tape is used for :
- (a) Historical storage (b) Computer input  
(c) Both (a) and (b) (d) Neither (a) nor (b)
- Q.25.** A characteristic of the ASCII code is :
- (a) its use of the zone code 1010, 1011 and 1100  
(b) its limitation to a maximum of 96 character configurations  
(c) its independence from the Hollerith code  
(d) All the above
- Q.26.** A temporary storage area, attached to the CPU, for I/O operations is a :
- (a) Chip (b) Buffer  
(c) Register (d) Core
- Q.27.** In magnetic disks, data is organized on the platter in a concentric sets of rings called :
- (a) Sector (b) Track  
(c) Head (d) Block
- Q.28.** A dumb terminal can do nothing more than communicate data to and from a CPU of a computer. How does a 'smart' terminal differ from a dumb terminal?
- (a) It has a primary memory  
(b) It has a cache memory  
(c) It has a microprocessor  
(d) It has an input device
- Q.29.** A code used for standardizing the storage and transfer of information amongst various computing devices is called :
- (a) CRT (b) CPU  
(c) ASCII (d) dvorak

- Q.30.** What is the name of the storage device which is used to compensate for the difference in rates of flow of data from once device to another?  
 (a) Cache (b) Concentrator  
 (c) Buffer (d) I/O device
- Q.31.** Which is the most popular medium for direct-access secondary storage of a computer?  
 (a) Magnetic tape (b) Magnetic disk  
 (c) RAM (d) ROM
- Q.32.** The standard size reel of magnetic tape is :  
 (a) 120 feet in length (b) 240 feet in length  
 (c) 1200 feet in length (d) 2400 feet in length
- Q.33.** Conversion of decimal number  $89_{10}$  it's binary number equivalent is :  
 (a)  $1011011_2$  (b)  $1100111_2$   
 (c)  $1011001_2$  (d)  $10011_2$
- Q.34.** A type of semiconductor memory that usually has small capacity but very fast access is :  
 (a) PROM (b) RAM  
 (c) scratchpad (d) ROM
- Q.35.** A single primary storage location in the processor unit :  
 (a) can hold several different data items at the same time  
 (b) can hold data items but not program instructions  
 (c) is identified by a built-in and unique number called an address  
 (d) is identified by a number that varies with the contents in the location
- Q.36.** A storage device where the access time is dependent upon the location of the data is :  
 (a) Random access (b) Serial access  
 (c) Sequential access (d) Transaction access
- Q.37.** A memory that holds microprograms is :  
 (a) core memory (b) ROM  
 (c) RAM (d) control memory
- Q.38.** Octal numbers are used :  
 (a) In computer hardware  
 (b) When binary numbers are too long  
 (c) Internal to the computer  
 (d) In preference to 'hex' number
- Q.39.** Binary numbers need more places for counting because :  
 (a) They are always big numbers  
 (b) Any no. of 0's can be added in front of them

- (c) Binary base is small  
 (d) 0's and 1's have to be properly spaced apart
- Q.40.** Any type of storage that is used for holding information between steps in its processing is :  
 (a) CPU (b) Primary storage  
 (c) Intermediate storage (d) Internal storage
- Q.41.** PROM is a type of computer memory. What does PROM stands for?  
 (a) Powered Read Only Memory  
 (b) Programmable Read Only Memory  
 (c) Permanent Read Only Memory  
 (d) Powered Read Only Memory
- Q.42.** Which one of the following is not a correct definition?  
 (a) SRAM → Static Random Access Memory  
 (b) PROM → Programmable Read Only Memory  
 (c) DRAM → Dynamic Random Access Memory  
 (d) SAM → Static Access Memory
- Q.43.** Which of the following are the type of the secondary storage?  
 (a) Floppy Disk & Hard Disk  
 (b) Floppy Disk & ROM  
 (c) Hard Disk & RAM  
 (d) None of the above
- Q.44.** Who defined the binary number system?  
 (a) Pascal (b) A.D. Leibniz  
 (c) Newton (d) Aristotle
- Q.45.** Find the valid statements  
 (a) A floppy has more capacity than a hard disk  
 (b) Hard disk is a primary memory device  
 (c) RAM stands for read access memory  
 (d) ROM is a permanent memory



### ANSWERS

1. (a) 2. (c) 3. (a) 4. (c) 5. (d) 6. (c) 7. (d) 8. (d)  
 9. (b) 10. (c) 11. (d) 12. (c) 13. (d) 14. (c) 15. (a) 16. (a)  
 17. (c) 18. (a) 19. (b) 20. (a) 21. (b) 22. (c) 23. (d) 24. (c)  
 25. (c) 26. (b) 27. (b) 28. (c) 29. (c) 30. (c) 31. (b) 32. (d)  
 33. (c) 34. (c) 35. (c) 36. (b) 37. (c) 38. (c) 39. (c) 40. (c)  
 41. (b) 42. (d) 43. (a) 44. (b) 45. (d)





- Q.1.** Software instructions intended to satisfy a user's specific processing needs are called \_\_\_\_\_.
- (a) Systems software      (b) A microcomputer  
(c) Documentation      (d) Application software
- Q.2.** Which of the following is responsible for coordinating various operations using timing signals?
- (a) Arithmetic-logic unit      (b) Control unit  
(c) Memory unit      (d) Input/Output unit
- Q.3.** A single bus structure is primarily found in :
- (a) Main frames  
(b) Super computers  
(c) High performance machines  
(d) Mini and micro-computers
- Q.4.** Data systems for planning are often called :
- (a) Decision analysis systems  
(b) Planning analysis systems  
(c) Decision support systems  
(d) All of the above
- Q.5.** What is the term which represents the use of links between information of all sorts whether text, graphics, video or audio-based?
- (a) Hypertext      (b) Hypermedia  
(c) HyperCard      (d) Wild Card
- Q.6.** The two basic types of record-access methods are :
- (a) Sequential and random  
(b) Sequential and indexed  
(c) Direct and immediate  
(d) On-line and realtime
- Q.7.** The advantages of COM are its \_\_\_\_\_ and \_\_\_\_\_
- (a) Compact size; readability  
(b) Compact size; speed  
(c) Readability; speed  
(d) Low-cost; readability
- Q.8.** The language that the computer can understand and execute is called :

- (a) machine language      (b) application software  
(c) system program      (d) all of the above
- Q.9.** A set of programs that handle firm's data base responsibilities is called a :
- (a) Data Base Management System (DBMS)  
(b) Data Base Processing System (DBPS)  
(c) Data Management System (DMS)  
(d) all of the above
- Q.10.** A computer will function only if it:
- (a) Has a control unit  
(b) Is given input data  
(c) Has a program in its memory  
(d) Has software package
- Q.11.** The comparison of data inside the arithmetic logic unit is referred to as a :
- (a) Instruction      (b) Data operation  
(c) Conditional question      (d) Logical operation
- Q.12.** Which of the following statement is false?
- (a) Generally, computers don't make mistake  
(b) Computers eliminate jobs  
(c) Computers can think  
(d) Maths is necessary to understand computers
- Q.13.** Most of the errors blamed on computers are actually due to:
- (a) Programming errors      (b) Hardware fatigue  
(c) Defects in floppy disks      (d) Data entry errors
- Q.14.** A programme written in machine language is called :
- (a) Assembler      (b) Object  
(c) Computer      (d) Machine
- Q.15.** Data transfer using telephone system is :
- (a) Time division multiplexing  
(b) Space division multiplexing  
(c) Frequency division multiplexing  
(d) All of the above

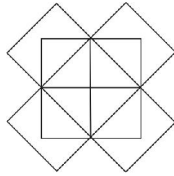


## ANSWERS

1. (d) 2. (b) 3. (d) 4. (c) 5. (b) 6. (a) 7. (b) 8. (a)  
9. (d) 10. (c) 11. (d) 12. (c) 13. (d) 14. (b) 15. (b)
- ☺☺☺

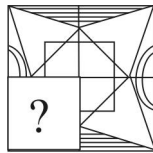


4. How many rectangles does the following figure have?

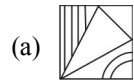


- (a) 10
- (b) 14
- (c) 13
- (d) None of these

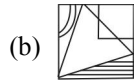
5. In the following question, complete the missing portion of the pattern (X) by selecting from the given alternatives (a), (b), (c) and (d).



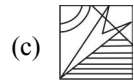
(X)



(a)



(b)



(c)

(d) None of these

6. This question contains a set of three figures X, Y and Z showing a sequence of folding of a piece of paper. Fig. (Z) shows the manner in which the folded paper has been cut. These three figures are followed by four answer figures from which you have to choose a figure which would most closely resemble the unfolded form of fig. (Z)



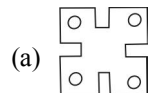
X



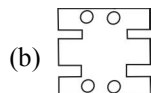
Y



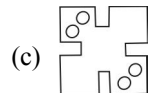
Z



(a)



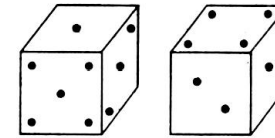
(b)



(c)

(d) None of these

7. Two positions of a dice are shown below. When there are two dots at the bottom, the number of dots at the top will be



- (a) 6
- (b) 3
- (c) 5
- (d) None of these

8. How many pairs of letters are there in the word 'CARROT' which have as many letters between them in the word as in the alphabet?

- (a) 1
- (b) 2
- (c) 3
- (d) None of these

9. A and B start moving towards each other from two places 200 m apart. After walking 60 m, B turns left and goes 20 m, then he turns right and goes 40m. He then turns right again and comes back to the road on which he had started walking. If A and B walk with the same speed, what is the distance between them now?

- (a) 20 m
- (b) 30 m
- (c) 40 m
- (d) None of these

10. A cylindrical water tank has a radius of 2.8 feet and a height of 5.6 feet. The water tank is filled to the top. If water can be pumped out at a rate of 36 cubic feet per minute, about how long will it take to empty the water tank?

- (a) 3 hr
- (b) 2 hr
- (c) 4 min
- (d) None of these

**SECTION - B**

**COMPUTERS**

11. Which one of the following is a domain name?

- (a) http
- (b) www.eduhealfoundation.org
- (c) http:// www.eduhealfoundation.org
- (d) None of these

12. Madhav wants to hide the toolbars. With the help of which menu he can do so?

- (a) Edit
- (b) View
- (c) Insert
- (d) Format

13. An integrated circuit is

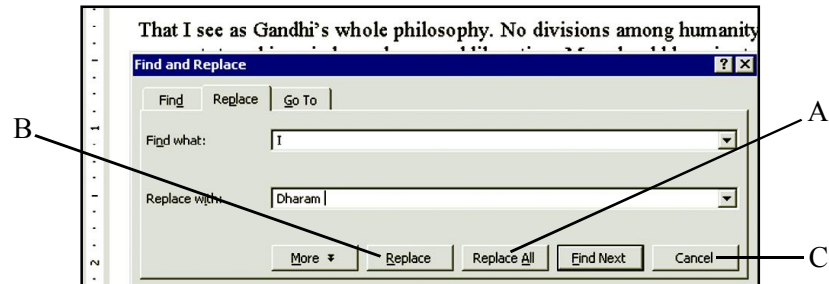
- (a) A simple circuit
- (b) An integrating device
- (c) Fabricated on a tiny silicon chip
- (d) None of these

14. In which toolbar spelling and grammar icon appears?

- (a) Standard toolbar (b) Formatting toolbar  
(c) Table toolbar (d) None of these

Use the following information to answer questions 15 and 16:

Dharam is typing an article on 'Mahatma Gandhi' in MS Word.



15. Which box he would click so that changes appear in whole document?

- (a) A (b) B (c) C (d) None of these

16. Which one of the following is shortcut for above given dialog box?

- (a) Ctrl +H (b) Ctrl +G  
(c) Ctrl + R (d) None of these

17. The desktop is found in which drive of computer

- (a) A:\ (b) C:\ (c) D:\ (d) None of these

18. E-mail stands for

- (a) Electrical mail (b) Electronic mail  
(c) Energetic mail (d) None of these

19. The information on a computer is stored in

- (a) Windows and desktop  
(b) Menus and dialog boxes  
(c) Files and folders (d) None of these

20. The option of writing subscript characters is found in the

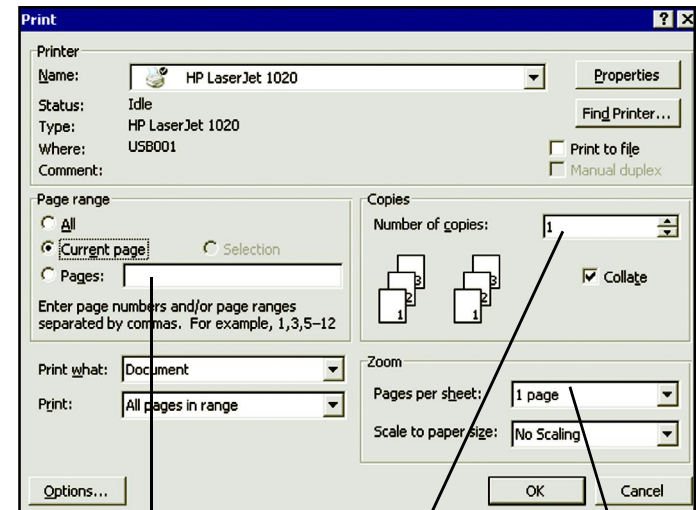
- (a) Table menu (b) Format menu  
(c) View menu (d) Insert menu

21. Radha renames her folder named as "FF" into "Radha/Sudha". Then she presses enter,

- (a) Computer shows error message  
(b) No message is displayed  
(c) Folder is renamed (d) None of these

Use the following Window to answer questions 22 to 24:

Praveen is working in MS Word and typing an article on football.



22. He click on OK button (as shown in above figure). Which one of the following would be printed?

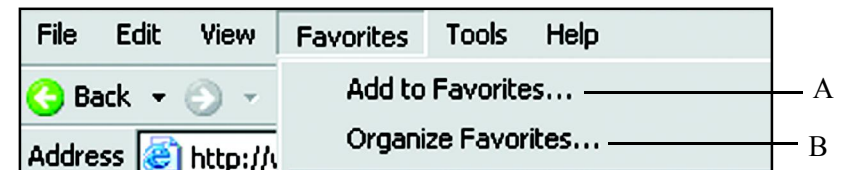
- (a) All pages of the document  
(b) Current page of the document  
(c) Page number 3  
(d) None of these

23. He wants to print 2 copies of his document. Where he should type for the desired result?

- (a) A (b) B (c) C (d) None of these

24. Which printer is he using?

- (a) HP Laser Jet 1020 (b) HP Laser Jet 1320  
(c) HP Laser Jet 3005 (d) None of these

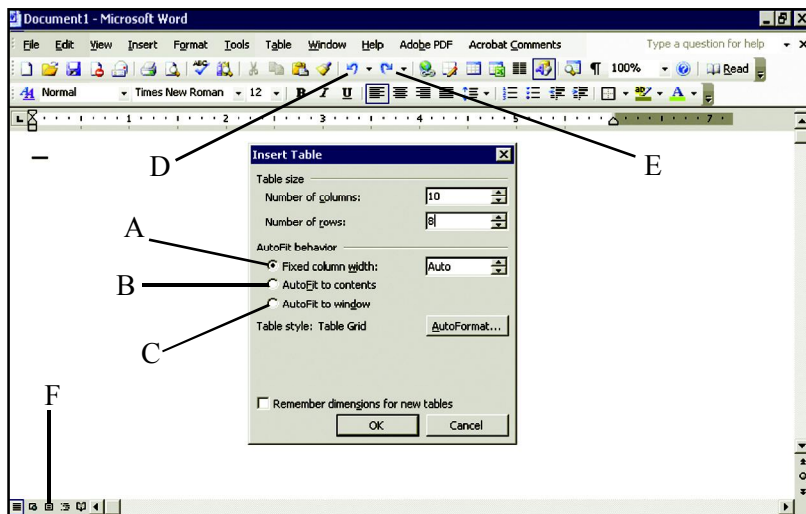





25. Jony wants to change the name of website which is already added up in favourite list. Which one of the following he has to choose?

- (a) A (b) B  
(c) Both (a) and (b) (d) None of these
26. What is the name of list that stores the URLs of Web pages and links visited in past few days?  
(a) Link list (b) Page list  
(c) History list (d) None of these
27. The operating system is a type of  
(a) System software (b) Application software  
(c) Language processor (d) None of these
28. Word wrap means  
(a) Inserting spaces between words  
(b) Aligning text with the right margin  
(c) Moving text automatically to the next line  
(d) None of these
29. Which one of the following is not available in format menu of Notepad Window?  
(a) Word wrap (b) Font  
(c) Paragraph (d) None of these
30. Which one of the following is dangerous for computers?  
(a) Worms (b) Virus  
(c) Both (a) and (b) (d) None of these

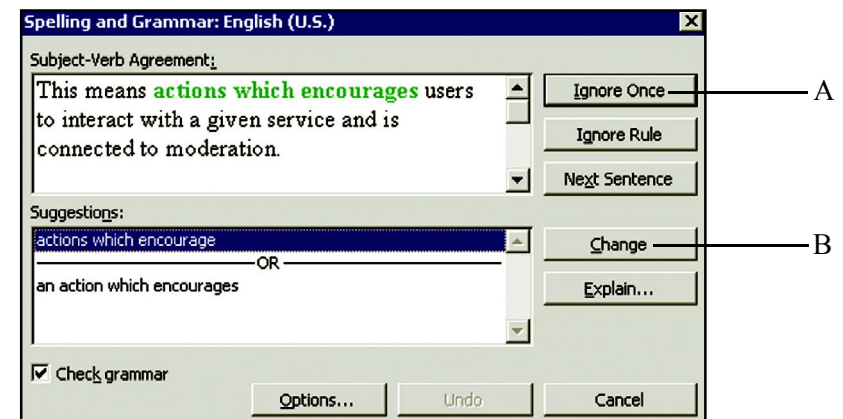
Use the following information to answer questions 31 to 34:

Piyush wants to make a table in MS Word.

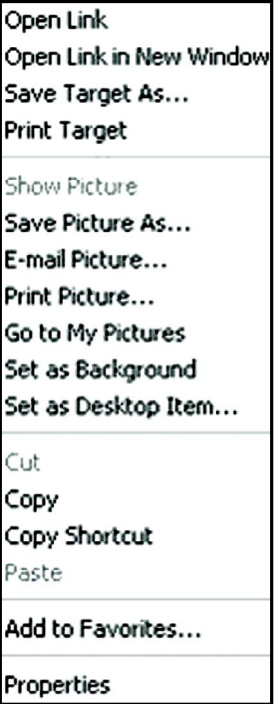




31. Which of the following he can use for undo?  
(a) D (b) E  
(c) Both (a) and (b) (d) None of these
32. He wants rows and columns adjust according to the content. Which one he should choose?  
(a) A (b) B (c) C (d) None of these
33. The file will be saved in :  
(a) .doc extension (b) .xls extension  
(c) .txt extension (d) None of these
34. He wants to see document in Print Layout View. What he has to select?  
(a) E (b) F  
(c) Both (a) and (b) (d) None of these
35. Which one of the following icon is used for font colour?  
(a)  (b)  (c)  (d) none of these
36. Which one of the following statement is not true?  
(a) Ctrl +down key will move cursor to the end of the current paragraph  
(b) Grammar check can be performed in MS Word.  
(c) Assembler translates high level language to machine language  
(d) None of these

Use the following information to answer questions 37 and 38:  
Himanshu is working in the MS Word. He use the spelling and grammar option for checking his grammar and spelling.



37. Which shortcut key is used for above dialog box?  
 (a) F7 (b) F6 (c) F5 (d) None of these
38. He doesn't want to make any change in the document. Which option he would click?  
 (a) A (b) B (c) C (d) none of these
39. Which of the following short cut menu appear when you right click on the desktop?

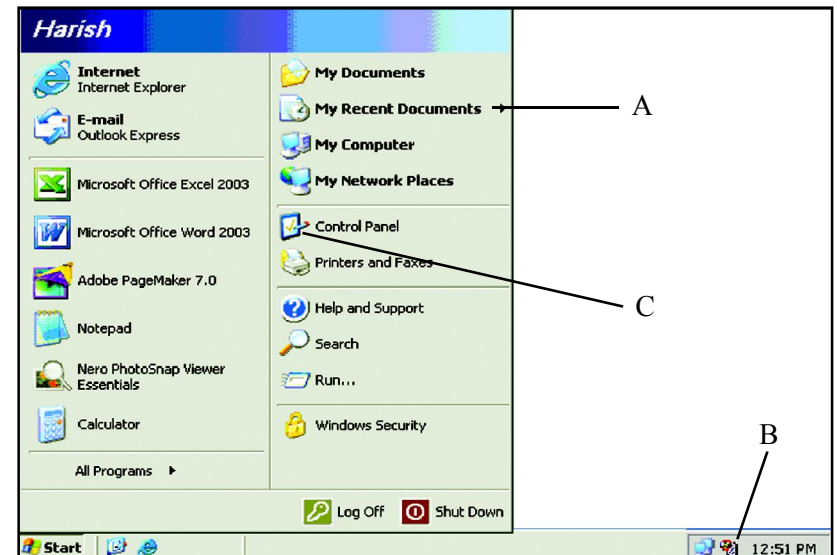
- (a)  (b) 
- (c)  (d) None of these

40. Monika saved her file in D:\. Where this file is saved in CPU?  
 (a) Hard disk (b) Floppy drive  
 (c) CD drive (d) None of these

## SECTION - C

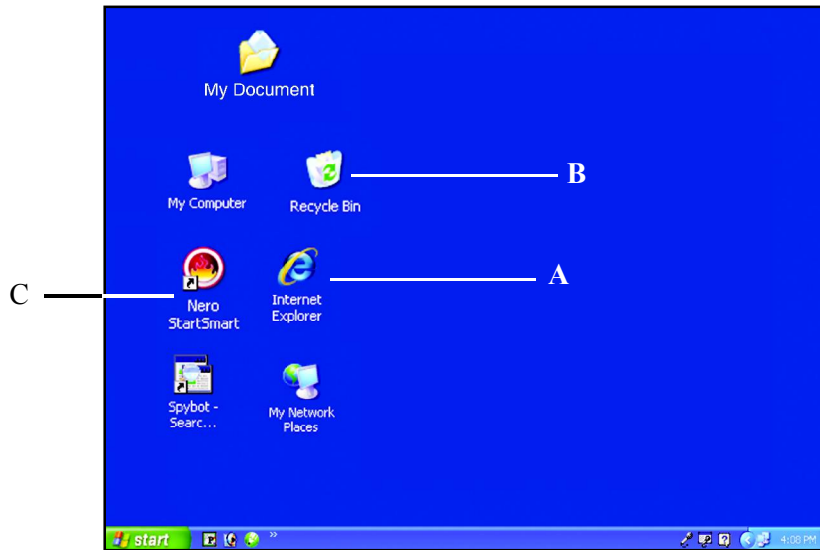
## INTERACTIVE SECTION

Use the following information to answer questions 41 and 42:  
 Harish is working in MS Word file and saved that file. After working he closed that file.



41. He wants to reopen that file but he has forgotten the right path of the file. He can open it with the help of  
 (a) A (b) B  
 (c) C (d) None of these
42. He wants to reset the timing. How it will be done?  
 (a) Double clicking on B and then reset the timing  
 (b) Click on C and then reset the time  
 (c) Click on A to get the clock folder  
 (d) None of these

Use the following Window to answer question 43 and 44:

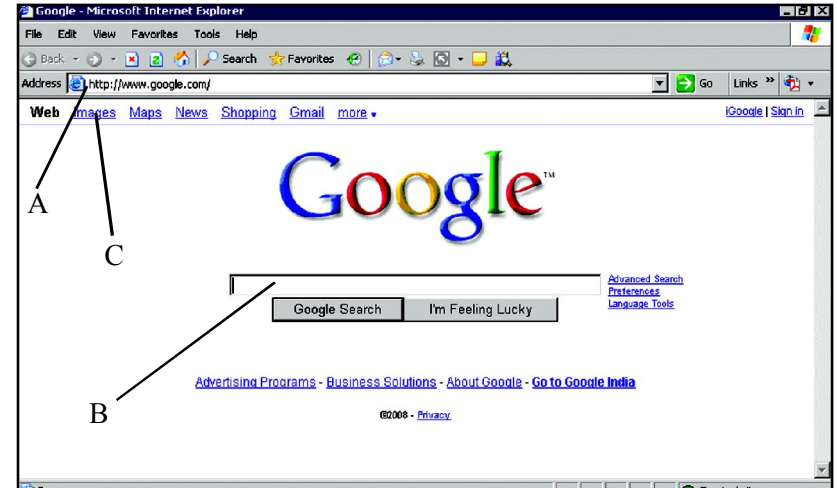


43. Dinesh by mistake deleted his excel file which was saved in C:\. From where he would be able to restore it?  
 (a) A (b) B (c) C (d) None of these
44. What is displayed on the Monitor?  
 (a) Desktop (b) MS Word  
 (c) MS Excel (d) None of these
45. What will be the formula to be put in cell H3 to get the total of the marks scored by students in all subjects.

MARKSHEET						
Name of the student	Eng.	Hindi	Math	Com.	Science	Total
Lalit	75	60	80	55	56	326
Pooja	85	55	50	60	66	316
Aman	55	65	60	70	71	321
Ravi	45	60	70	64	80	319
Rakhi	60	55	50	54	75	294
Ritu	70	45	55	68	80	318

- (a) = Sum (C3 : G3) (b) = Sum (C3 : G4)  
 (c) =Sum (C4 : F4) (d) = Sum (C4 : H4)

Use the following Window to answer questions 46 to 50:



46. The website shown in the window is a  
 (a) Search engine (b) Web browser  
 (c) Uniform resource locator (d) None of these
47. 'Ankit can search information in English language only.' The statement is  
 (a) True (b) False  
 (c) Data incomplete (d) None of these
48. By using which link he will be able to search pictures?  
 (a) A (b) B (c) C (d) None of these
49. Which one of the following is called address box?  
 (a) A (b) C (c) B (d) None of these
50. Web is .....  
 (a) Part of internet (b) Different from internet  
 (c) Same as internet (d) None of these



## ANSWERS

1. (a) 2. (b) 3. (c) 4. (b) 5. (b) 6. (a) 7. (b) 8. (a)  
 9. (c) 10. (c) 11. (b) 12. (b) 13. (c) 14. (a) 15. (a) 16. (a)  
 17. (b) 18. (b) 19. (c) 20. (b) 21. (a) 22. (b) 23. (c) 24. (a)  
 25. (b) 26. (c) 27. (a) 28. (c) 29. (c) 30. (c) 31. (a) 32. (b)  
 33. (a) 34. (b) 35. (b) 36. (d) 37. (a) 38. (a) 39. (c) 40. (a)  
 41. (a) 42. (a) 43. (b) 44. (a) 45. (a) 46. (a) 47. (b) 48. (c)  
 49. (a) 50. (a)

