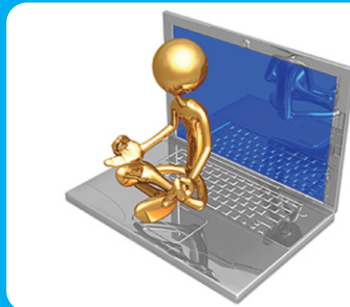


EtG

# OLYMPIAD EXPLORER



Workbook for

International **CYBER** Olympiad  
National/International Olympiads/Talent Search

Based on CBSE, ICSE, GCSE, State Board Syllabus & NCF (NCERT)

100's of Q's with answers

- Chapterwise Practice Q's
- Revision Q's
- Sample Paper



Class

11

## EDUHEAL FOUNDATION

### • LEARNING FOR LIFE

EduHeal Foundation conducts 5 Olympiads annually reaching  
• 4 Lakh + Students • 50,000 Coordinating Teachers and having  
in English / Maths / Science / Biotech / Computer & 300 R

PRIZES



WORKSHOP • TEACHER TRAINING PROG. • MAGAZINE/LAB GRANT • PRINCIPAL LEADERSHIP AWARD.

# Contents

S.No.	Chapters	Page No.
1.	Computer Hardware .....	1
2.	Windows Server & Website .....	4
3.	C++ .....	10
4.	Algorithms .....	16
5.	Oracle .....	19
6.	Visual Basic .....	32
7.	Revision Questions .....	36
8.	ICO Sample Paper .....	42



## SYLLABUS GUIDELINES

**Based on CBSE, ICSE & GCSE Syllabus  
& NCF guidelines devised by NCERT.**

Computer Hardware; Windows Server & Website; C++; Algorithms;  
Oracle; Visual Basic.



- Q.1** Which of the following is not a type of motherboard expansion slot?
- (a) ISA (b) PCI  
(c) AGP (d) ATX
- Q.2.** Which IRQ does COM1 commonly use?
- (a) 3 (b) 4  
(c) 6 (d) 7
- Q.3.** Which of the following is not a type of computer hard drive?
- (a) IDE (b) FDD  
(c) SCSI (d) EIDE
- Q.4.** Which of the following retains the information it's storing when the power to the system is turned off?
- (a) CPU (b) ROM  
(c) RAM (d) DRAM
- Q.5.** How can you tell that a particular ribbon cable should only be used to connect a floppy drive?
- (a) it's white  
(b) it has a red line along one edge  
(c) it's wider than all the other ribbon cables  
(d) it has a twist in it
- Q.6.** Which IRQ does the system timer commonly use?
- (a) 0 (b) 1  
(c) 5 (d) 10
- Q.7.** What is BIOS an acronym for?
- (a) bootstrap initial operating system  
(b) basic input output startup  
(c) boot initial operating startup  
(d) basic input output system
- Q.8.** Which of the following is not a type of RAM?
- (a) SIMM (b) DIMM  
(c) ROM (d) SLIPP
- Q.9.** What does FDISK do?
- (a) performs low-level formatting of the hard drive  
(b) fixes bad sectors on the hard drive  
(c) recovers lost clusters on the hard drive  
(d) creates partitions on the hard drive

- Q.10.** What type of connector is used to plug a telephone line into a modem?  
 (a) COM1 (b) RJ-45  
 (c) RJ-11 (d) RJ-10
- Q.11.** Which IRQ does LPT1 commonly use?  
 (a) 1 (b) 4  
 (c) 5 (d) 7
- Q.12.** When plugging the P8 and P9 power connectors into the system board, which of the following is true?  
 (a) the black wires of both connectors should not be next to each other  
 (b) P8 and P9 don't plug into the system board  
 (c) the black wires of both connectors should be next to each other  
 (d) it doesn't matter which way you plug them in, the voltages are the same
- Q.13.** What is different between AT and ATX power supplies?  
 (a) they are identical except for their shape.  
 (b) at supplies use a single P1 power connector while ATX uses P8 and P9.  
 (c) at power supplies run on 120V AC current while ATX uses 220V AC  
 (d) at supplies use P8 and P9 power connectors while ATX uses a single P1 connector.
- Q.14.** How many pins does a SIMM have?  
 (a) 50 (b) 64  
 (c) 30 or 72 (d) 168
- Q.15.** How many pins does a DIMM have?  
 (a) 50 (b) 64  
 (c) 72 (d) 128
- Q.16.** Parity is:  
 (a) a byte stored in the FAT to indicated remaining slots  
 (b) the optimal transmission speed of data over a CAT 5 cable  
 (c) a system for balancing the voltage coming out of the power supply  
 (d) an extra bit stored with data in RAM that is used to check for errors when the data is read back

- Q.17.** IRQ 6 is commonly assigned to:  
 (a) sound card (b) COM1  
 (c) floppy drive controller (d) LPT1
- Q.18.** What are the four key functions of a computer system?  
 (a) input, processing, output, and storage  
 (b) keyboard, display, memory, and disk drive  
 (c) word processing, spreadsheets, database, and contact management  
 (d) read, write, calculate, and display
- Q.19.** What kind of connectors are used to connect a PC power supply to a hard drive?  
 (a) AT (b) molex  
 (c) mini-molex (d) P9
- Q.20.** IRQ 1 is commonly assigned to:  
 (a) it's usually open (b) system timer  
 (c) real time clock (d) keyboard
- Q.21.** How much data will a high density (HD) floppy disk hold?  
 (a) 124 KB (b) 640 KB  
 (c) 720 KB (d) 1.44 MB
- Q.22.** Which of the following conditions most increases the likelihood that ESD will occur?  
 (a) hot, dry conditions (b) cool, damp conditions  
 (c) cool, dry conditions (d) hot, damp conditions
- Q.23.** Which IRQ does the hard disk controller commonly use?  
 (a) 0 (b) 1  
 (c) 4 (d) 14



## ANSWERS

1. (d) 2. (b) 3. (b) 4. (b) 5. (d) 6. (a) 7. (d) 8. (c)  
 9. (d) 10. (c) 11. (d) 12. (c) 13. (d) 14. (c) 15. (d) 16. (d)  
 17. (c) 18. (a) 19. (b) 20. (d) 21. (d) 22. (c) 23. (d)



- Q.1.** Prakash an administrator on a network that consists of a single Windows NT 4 domain with 4 Windows NT 4.0 servers and 900 work stations. Prakash wants to add a Windows 2000 computer to his network as a domain controller in the existing domain. What can he do?
- Shut down the PDC on the existing Windows NT 4.0 domain. Install Windows 2000 server on the new computer and run the Active directory installation w
  - Install Windows NT 4.0 server on the new computer and designate it as a BDC in the existing domain, then promote it to a PDC and then upgrade the computer.
  - Shut down the PDC on the existing Windows NT 4.0 domain. Install Windows 2000 server on the new computer and run the Active directory installation wiz
  - Install Windows NT 4.0 server on the new computer and designate it as a PDC in the new domain that has the same NetBIOS name as an existing domain. Up
- Q.2.** When a domain is converted to Native mode, what will happen to the 4.0 servers?
- Windows NT 4.0 BDCs will receive replication update changes from PDC emulator
  - No Windows NT 4.0 BDCs can be added to the domain
  - Windows NT 4.0 BDCs can still be added to the domain
  - None of these
- Q.3.** User mode layer is made up of 2 subsystems: environmental subsystem and integral subsystem. Identify components of Integral subsystems:
- Security
  - Workstation service
  - Server service
  - All of the above
- Q.4.** You are responsible for maintaining the Windows 2000 Server installations in your network. You install Terminal Services on a Windows 2000 domain controller. You configure your clients to allow them local logon to the terminal server. You are
- Active Directory Users and Computers
  - Termclient.exe
  - RDP Manager
  - Terminal Services Manager
- Q.5.** You are responsible for maintaining the Windows 2000 Server installations in your network. You are installing Windows 2000 Server on a new Quad processors computer. The manufacturer has provided a customized hardware abstraction layer to use with the computer
- the system clock is adjusted to a date before the release date of Windows 2000
  - the new HAL is designed for single processor kernel
  - the kernel is corrupted
  - the Windows 2000 source CD is damaged
- Q.6.** You are configuring a RRAS server on a Windows 2000 server computer. You discover that an incorrect driver was installed during the installation of the modem. You remove the modem by deleting drivers and the modem stops responding. How would you install it?
- Shut down the server, remove the modem, restart the server, shut down the server again, install the modem again, start the server
  - Use the Add/Remove Hardware Wizard to uninstall the modem and restart the server
  - Use regedt32 to remove the modem driver from the registry
  - Remove the driver by running the Modem troubleshooter and reboot the server
- Q.7.** EduSys Publication has a Windows 2000 network serving 200 users. A server named User\_srv is used to hold users' files. User\_srv is configured with a single large NTFS volume. Every user has a home folder on User\_srv. Users can also use a shared folder named
- Move some of the files from her home folder to the IN\_PROGRESS shared folder.
  - Compress the files in her home folder to save disk space.
  - Remove files from her home folder until the total uncompressed file size is less than 100 MB.
  - Change the security settings of some of the files in her home folder to grant Full Control permissions to a user who has not reached the quota level.
- Q.8.** Sinha is the administrator responsible for security and user desktop settings on his company network. He needs to configure a custom registry entry for all users. How would he add the custom registry entry into a Group Policy object with the least amount so

- (a) He should configure a Microsoft Windows Installer package and add the package to the GPO.
- (b) He should configure RIS to include the registry entry.
- (c) He should configure an ADM template and add the template to the GPO.
- (d) He should configure an INF policy and add the policy to the GPO.

**Q.9.** You are responsible for maintaining the Windows 2000 Server installations in your network. Your network includes Windows NT Server 4.0 computers, NT Workstation 4.0 computers and Unix computers. The network consists of a single Windows NT domain. You are

- (a) Devote one computer as the DHCP server that supports dynamic DNS updates
- (b) Disconnect Server1 from the production network
- (c) Devote one computer as the DNS server that supports SRV records and accept dynamic updates
- (d) Devote one computer as the WINS server that works with the DNS server

**Q.10.** You are responsible for maintaining the Windows 2000 Server installations in your network. After a new adapter driver is installed onto your RAS server by your assistant Jay, one of the users at a remote location reports that the server does not accept

- (a) update.exe with the /slip switch
- (b) spupdate.exe
- (c) update.exe with the /stream switch
- (d) spupdate.exe with the /slipstream switch

**Q.11.** Which of the following are conditions required for installing W2K over the network?

- (a) Create a distribution server which has a file share containing the contents of the /i386 directory from the Windows 2000 CD-ROM.
- (b) 1 GB minimum plus 200 MB free drive space to hold temporary files
- (c) 500 MB minimum plus 200 MB free drive space to hold temporary files
- (d) (a) and (b)

**Q.12.** You are responsible for maintaining the Windows 2000 Server installations in your network. You have a SMP server that runs both 32bit and 16bit applications. Based on the advice

from your boss, these 16bit applications are configured to run in the same time

- (a) performance monitoring is to be done via thread IDs
- (b) performance monitoring is to be done via NTVDM instance
- (c) the 16-bit applications can be running simultaneously
- (d) multiple 16-bit application threads can be running simultaneously

**Q.13.** You are responsible for maintaining the Windows 2000 Server installations in your network. You are configuring the security policy for a group of users in the finance organizational unit. You are requested by your boss to configure a group policy to ensure

- (a) you did not configure the refresh interval for all the computers
- (b) you did not replicate the configuration to all the domain controllers
- (c) you did not configure the refresh interval for all the users
- (d) you did not configure the refresh interval for the everyone group

**Q.14.** What does HTML stand for?

- (a) Hyper Text Markup Language
- (b) Hyperlinks and Text Markup Language
- (c) Home Tool Markup Language
- (d) None of these

**Q.15.** Who is making the Web standards?

- (a) Microsoft
- (b) Netscape
- (c) The World Wide Web Consortium
- (d) None of these

**Q.16.** Choose the correct HTML tag for the largest heading

- (a) <h6>
- (b) <h1>
- (c) <head>
- (d) <heading>

**Q.17.** What is the correct HTML tag for inserting a line break?

- (a) <break>
- (b) <br>
- (c) <lb>
- (d) <|>

**Q.18.** What is the correct HTML for adding a background color?

- (a) <body color="yellow">
- (b) <background>yellow</background>
- (c) <body bgcolor="yellow">
- (d) none of these

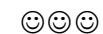
- Q.19.** Choose the correct HTML tag to make a text bold  
 (a) <bb> (b) <bold>  
 (c) <bld> (d) <b>
- Q.20.** What is the correct HTML for making a hyperlink?  
 (a) <a>http://www.w3schools.com</a>  
 (b) <a url="http://www.w3schools.com">W3Schools.com</a>  
 (c) <a name="http://www.w3schools.com"> W3Schools.com</a>  
 (d) <a href="http://www.w3schools.com">W3Schools</a>
- Q.21.** Which of these tags are all <table> tags?  
 (a) <thead><body><tr>  
 (b) <table><head><tfoot>  
 (c) <table><tr><tt>  
 (d) <table><tr><td>
- Q.22.** Choose the correct HTML to left-align the content inside a tablecell  
 (a) <td align="left">  
 (b) <tdleft>  
 (c) <td valign="left">  
 (d) <td leftalign>
- Q.23.** How can you make a list that lists the items with numbers?  
 (a) <ol> (b) <dl>  
 (c) <list> (d) <ul>
- Q.24.** What is the correct HTML for making a checkbox?  
 (a) <check>  
 (b) <input type="check">  
 (c) <input type="checkbox">  
 (d) <checkbox>
- Q.25.** What is the correct HTML for making a text input field?  
 (a) <textinput type="text">  
 (b) <input type="text">  
 (c) <input type="textfield">  
 (d) <textfield>
- Q.26.** What is the correct HTML for making a drop-down list?  
 (a) <input type="dropdown">  
 (b) <select>  
 (c) <input type="list">  
 (d) <list>

- Q.27.** What is the correct HTML for making a text area?  
 (a) <input type="textarea">  
 (b) <textarea>  
 (c) <input type="textbox">  
 (d) none of these
- Q.28.** What is the correct HTML for inserting an image?  
 (a) <img>image.gif</img>  
 (b) <image src="image.gif">  
 (c) <img href="image.gif">  
 (d) 
- Q.29.** What is the correct HTML for inserting a background image?  
 (a)   
 (b) <background img="background.gif">  
 (c) <body background="background.gif">  
 (d) none of these
- Q.30.** If you want to create a very simple, very basic Web page, which source code would you use? This code also makes it possible for you to display a basic Web page in your browser, without the benefit of a server or browser extensions.  
 (a) JavaScript (b) HTML  
 (c) ASP (d) CGI
- Q.31.** Which of these are correct statements?  
 (a) Internet Explorer is a browser that can be used to surf the Web.  
 (b) An excellent way to find information on the Web is to use a search engine.  
 (c) Two of the most popular features of the Internet are e-mail and the World Wide Web  
 (d) All of the these



## ANSWERS

1. (b) 2. (b) 3. (d) 4. (d) 5. (b) 6. (b) 7. (c) 8. (c)  
 9. (c) 10. (a) 11. (d) 12. (a) 13. (a) 14. (a) 15. (c) 16. (a)  
 17. (b) 18. (c) 19. (b) 20. (d) 21. (d) 22. (a) 23. (c) 24. (c)  
 25. (c) 26. (a) 27. (c) 28. (c) 29. (d) 30. (b) 31. (d)



- Q.1.** C++ was originally developed by  
 (a) Nicolas Wirth (b) Donald Knuth  
 (c) Bjarne Stroustrup (d) Ken Thompson
- Q.2.** The standard c++ comment  
 (a) / (b) //  
 (c) /\* and \*/ (d) None of these
- Q.3.** The preprocessor directive #include is required if  
 (a) Console output is used  
 (b) Console input is used  
 (c) Both console input and output is used  
 (d) None of these
- Q.4.** The operator << is called  
 (a) an insertion operator (b) put to operator  
 (c) either (a) or (b) (d) None of these
- Q.5.** The operator >> is called  
 (a) an extraction operator (b) a get from operator  
 (c) either (a) or (b) (d) get to operator
- Q.6.** When a language has the capability to produce new data type, it is called  
 (a) Extensible (b) Overloaded  
 (c) Encapsulated (d) Reprehensible
- Q.7.** The C++ symbol <<  
 (a) perform the action of sending the value of expression listed as its right to the outputs strewn as the left.  
 (b) is used to indicate the action from right to left  
 (c) is adopted to resemble an arrow  
 (d) All the above
- Q.8.** C++ name was suggested by  
 (a) Rick Mascitti (b) Bjarne Stroustrup  
 (c) Donald Knuth (d) Ken Thompson
- Q.9.** What is a reference?  
 (a) an operator  
 (b) a reference is an alias for an object  
 (c) used to rename an object  
 (d) None of these

- Q.10.** A constructor is called whenever  
 (a) a object is declared (b) an object is used  
 (c) a class is declared (d) a class is used
- Q.11.** State the object oriented languages  
 (a) C++ (b) Java  
 (c) Eiffel (d) All of the above
- Q.12.** Overload function in C++  
 (a) a group function with the same name  
 (b) all have the same number and type of arguments  
 (c) functions with same name and same number and type of arguments  
 (d) All of the above
- Q.13.** Operator overloading is  
 (a) making c++ operators works with objects  
 (b) giving new meaning to existing c++ operators  
 (c) making new c++ operator  
 (d) both and (a) & (b)
- Q.14.** What's wrong? (x = 4 && y = 5) ? (a = 5) ; (b = 6);  
 (a) the question mark should be an equal sign  
 (b) the first semicolon should be a colon  
 (c) there are too many variables in the statement  
 (d) the conditional operator is only used with apstrings
- Q.15.** A class having no name  
 (a) is not allowed  
 (b) can't have a constructor  
 (c) can't have a destructor  
 (d) can't be passed as an argument
- Q.16.** The differences between constructors and destructor are  
 (a) constructors can take arguments but destructor can't  
 (b) constructors can be overloaded but destructors can't be overloaded  
 (c) both (a) & (b)  
 (d) None of these



### ANSWERS

1. (c) 2. (b) 3. (c) 4. (c) 5. (c) 6. (a) 7. (d) 8. (a)  
 9. (b) 10. (a) 11. (d) 12. (a) 13. (d) 14. (b) 15. (c) 16. (c)






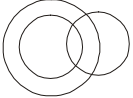

## INTERNATIONAL CYBER OLYMPIAD (ICO) SAMPLE PAPER

Total duration : 60 Minutes

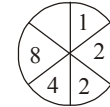
Total Marks : 50

### SECTION - A

#### GENERAL IQ.

- Two-fifth of one-third of sixty per cent of a number is 40. What is 125 per cent of that number?  
(a) 550 (b) 750  
(c) 625 (d) None of these
- If the height of a triangle is decreased by 40% and its base is increased by 40%, what will be the effect on its area?  
(a) 16% increase (b) 8% increase  
(c) 16% decrease (d) None of these
- A circular ground, whose diameter is 35 metres, has a 1.4 metre broad garden around it. What is the area of the garden in square metres?  
(a) 160.16 (b) 6.16  
(c) 1122.66 (d) None of these
- Shirt, garment and cloths, can be shown by  
(a)  (b)   
(c)  (d) None of these
- There are six books A, B, C, D, E and F. B, C and E have blue covers while the rest have red covers. D and F are new books while the rest are old books. A, C and D are law reports while the rest are of physics. Which is the red covered new law report book?  
(a) A (b) D  
(c) C (d) None of these
- The ratio of boys and girls in a school is 4 : 3. If there are 480 boys in the school, find the difference in number of girls and boys.  
(a) 120 (b) 150  
(c) 360 (d) None of these
- Toffees are distributed among A, B, C, D and E in such a way that A gets one less than B, C gets 5 more than D and E gets 3 more than B. If B and D's shares are equal who got the maximum number of toffees?  
(a) C (b) B  
(c) D (d) None of these

- In a certain code, "BOY" is written as \$\*• and "HOUR" is written as @\*£0. How is "RUBY" written in that code?  
(a) 0 £\$• (b) 0 \$ £•  
(c) •\$ £ 0 (d) None of these
- Some letters are missing in the given letter sequence. Find the correct alternative to fill the gap in each case.  
a b a-b c a - a c - c a b - c b c  
(a) b b b b (b) c c b a  
(c) c b b a (d) c a a c
- Insert the missing number :



- (a) 32 (b) 16  
(c) 4 (d) 10

### SECTION - B

#### COMPUTERS

- Which of the following describes the functions of a program?  
(a) Specifying the locations of variable in the memory  
(b) Specifying constant  
(c) Specifying the various operation to be performed by the computer  
(d) All the above
- A set of well defined procedures based on mathematical and geometric formula for a finite number of steps is called  
(a) A permutation (b) An algorithm  
(c) A geometric model (d) None of these
- Error in a computer program is called  
(a) Editor (b) Bug  
(c) Debugger (d) None of these
- Which type of errors are flagged by compiler?  
(a) Logical errors (b) ABACUS  
(c) Syntax errors (d) MARK-I
- Swapping of two numbers is done by  
(a) Direct by interchanging their values with each other.  
(b) Storing the value of one in a temp. variable of the other into the first and then copying the value of temp to the temp  
(c) Transfer one number to other number without storing any number in the temp. variable  
(d) None of these

16. It is a value, written into a program instruction, that does not change during the execution of a program.
- (a) Constant (b) Data type  
(c) Integer (d) None of these
17. Which of the following statement is true?
- (a) An assembly language programs runs faster than high level programs.  
(b) It is easy to correct or modify machine language programs  
(c) An assembly language program contains more instruction as compared to high level program  
(d) High level language is machine dependent.
18. Which of the following is not a token?
- (a) Keyword (b) Identifiers  
(c) Literal (d) None of these
19. Which tag is used to create a hypertext relationship between the current document and another URL?
- (a) <ISINDEX> (b) <A>  
(c) <P> (d) None of these
20. A host on the internet finds another host by its
- (a) Postal address (b) Electronic address  
(c) IP address (d) None of these
21. In the batch processing environment, data is:
- (a) Entered directly into the computer  
(b) Held in a temporary computer file  
(c) Processed immediately.  
(d) Collected over a period of time
22. The program that controls the execution of application programs and acts as an interface between user of a computer and computer hardware is known as:
- (a) Linker (b) Operating system  
(c) Compiler (d) Text editor
23. The use of computers in data processing has had several impacts on business. Which of the following is not one of them?
- (a) Easier business growth  
(b) Fewer clerical workers  
(c) Increased data – processing costs  
(d) More and better information
24. Which type of network is used in banking sector?
- (a) Local area network (b) Wide area network  
(c) Metropolitan area network (d) None of these

25. It is a graphical device for moving vertical and horizontal through a document with a mouse?
- (a) Line break (b) Page break  
(c) Drag (d) Scroll bar
26. Arrays are passed as argument to a function by
- (a) Value (b) Reference  
(c) Both (a) and (b) (d) None of these
27. Which of the following computer is used for weather forecasting?
- (a) Hybrid computer (b) Analog computer  
(c) Digital computer (d) None of these
28. Which of the following is not Software?
- (a) FORTRAN (b) Compiler  
(c) Procedure for inputting data  
(d) Integrated circuit
29. A class whose properties are inherited by other classes (its subclasses).
- (a) Base class (b) Derived class  
(c) Class (d) None of these
30. The backbone of Internet Relay Chat
- (a) Internet relay chat (b) Internet relay networks  
(c) Internet relay client (d) None of these
31. A certain computer hardware components does not process the data itself but acts as a central nervous system for other data manipulating components. What is it called?
- (a) ALU (b) RAM  
(c) Control unit (d) Secondary storage
32. A magnetic tape volume that is used on a data processing operation without any change to its content is:
- (a) Magnetic disk (b) Punched paper tape  
(c) Master tape (d) Card reader
33. Amongst the computer files there is one which is mostly used for maintaining such status information as balances in bank account records, stock on hand balances in inventory records and year to date earning amounts in payroll records .Can you tell the name of the file?
- (a) Transaction file (b) Index file  
(c) Backup file (d) Master file
34. The process of identifying and correcting mistakes in a computer program is referred to as:

- (a) Debugging (b) Desk checking  
(c) Validation (d) Verification
35. Which of the following are the backgrounds – related attributes of <body> elements?  
(a) Background colour (b) Bgcolour  
(c) Background (d) None of these
36. When you display your document in Full Screen view  
(a) You cannot use the menu or shortcut menu commands  
(b) You see the previous page and next page buttons  
(c) You add section breaks to your document  
(d) None of these
37. In Flowchart of a computer program, symbols are used for indicating certain steps. Can you tell for what purpose the diamond shaped symbol is used?  
(a) Decision making (b) Input/output  
(c) Processing (d) Action flow
38. When you connect to an online information service, you are asked to provide some kind of identification such as your name, an account number and a password. What is the name given to this brief dialogue between you and the information system?  
(a) Security procedure (b) Safeguard procedure  
(c) Identification procedure (d) Log – on procedure
39. Which of the following allows users to specify what the computer is supposed to do rather than how the computer is supposed to do it?  
(a) Non procedural language (b) BASIC  
(c) FORTRAN (d) COBOL

## SECTION - C

## INTERACTIVE SECTION

40. Computer cannot communicate with each other directly over telephone lines because they use digital pulse whereas telephone lines use analog sound frequencies. What is the name of the device which permits digital to analog conversion at the start of a long distance transmission?  
(a) Interface (b) Modem  
(c) Attenuation (d) Teleprocessor
41. The web server can be addressed by either its domain name or by the address in numerical

- (a) Network host (b) IRC network  
(c) Archie (d) None of these
42. A host on the internet finds another host by its  
(a) TCP/IP (b) Electronic address  
(c) FTP (d) None of these
43. When multi dimensional arrays are assigned initial value?  
(a) Rightmost subscript increases most rapidly  
(b) Leftmost subscript increases most rapidly  
(c) Rightmost subscript increases least  
(d) None of these
44. When one dimensional character array of unspecified length is assigned an initial value?  
(a) an arbitrary character is automatically added to the end of the string  
(b) '\0' is added at the end of the string  
(c) Length of the string is added to the end of the string  
(d) None of these
45. Special effects used to introduce slides in a presentation are called :  
(a) Effects (b) Custom animations  
(c) Transitions (d) Preset animations
46. What is the common name given to a program written in any one of the high level languages?  
(a) Object program (b) System program  
(c) Source program (d) Compiler program
47. Sorting an array in the ascending order of numbers is the process of  
(a) Putting the largest number first and smallest in the last  
(b) Putting the smallest number first and the largest number in the last  
(c) Putting the numbers in any way you desire  
(d) None of these
48. The main function of the dispatcher (the portion of the process scheduler) is :  
(a) Swapping a process to the disk  
(b) Assigning ready process to the CPU.  
(c) Suspending some of the processes when the CPU load is high  
(d) Bring processes from the disk to the main memory.
49. Data transfer using telephone system is :

- (a) Time division multiplexing
- (b) Space division multiplexing
- (c) Frequency division multiplexing
- (d) All of the above

50. When you insert an excel file into a Word document, the data are?

- (a) Hyperlinked
- (b) Placed in a word table
- (c) Linked
- (d) Embedded



## ANSWERS

1. (c) 2. (c) 3. (a) 4. (c) 5. (b) 6. (a) 7. (a) 8. (a)  
 9. (c) 10. (a) 11. (c) 12. (b) 13. (b) 14. (c) 15. (b) 16. (a)  
 17. (c) 18. (d) 19. (d) 20. (c) 21. (d) 22. (b) 23. (c) 24. (c)  
 25. (d) 26. (c) 27. (a) 28. (d) 29. (a) 30. (b) 31. (a) 32. (c)  
 33. (d) 34. (a) 35. (b) 36. (d) 37. (a) 38. (d) 39. (a) 40. (b)  
 41. (a) 42. (a) 43. (a) 44. (b) 45. (c) 46. (c) 47. (b) 48. (b)  
 49. (b) 50. (b)

